

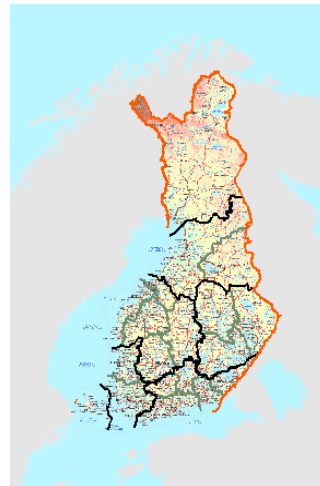
Production of Land and Tenure data for Responsible Land Governance and 2030 Agenda

Mr. Markku Markkula
March 14, 2017 Delft
National Land Survey of Finland



Statistics of Finland

- ❑ 5,4 million inhabitants
- ❑ 15,8 inhabitants per km² (40,5 per square mile)
- ❑ 2,7 million real estate units
- ❑ 2,6 million building and dwellings
- ❑ 0,6 million enterprises and corporations
- ❑ 3,7 million vehicles



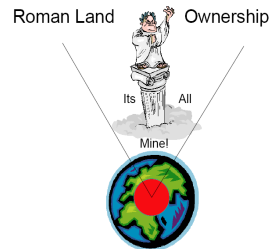
SOME NATIONAL EFFORTS

New register of housing company shares

Portfolio of E-services

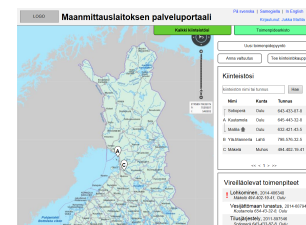
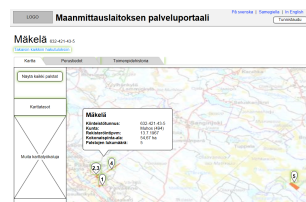
Effective use of spatial data

Improving cadastral system – Cadastre 2035?



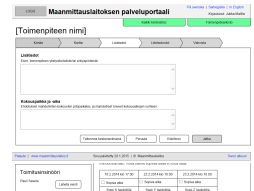
What can you do with the Two-way services ?

- Search objects by:
 - Real property ID, place name, address
- Download free:
 - Topographic and historical maps, aerial and laser scanned data
- Order NLS products:
 - Registry certificates, printed maps...
- Check basic information of own real properties
- Get access to archive material
- See all current activities
- See personal transaction history
- Create authorizations for others (to act in your place)

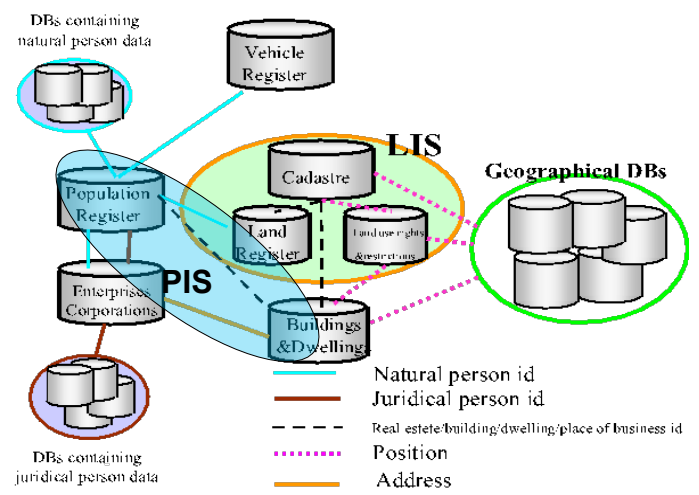


What can you do with the Two-way services ?

- Initiate cadastral survey procedures:
 - Guidance on web pages with service descriptions and videos
 - Map interface connected with forms (application etc.)
 - Estimated timetable and costs
- Take part in cadastral surveys via web
 - See all the phases: memos, maps and other material
 - Give comments, make questions
 - Propose date and time for next meetings



Key Register System 2017



- Integration of register data using IDs and position as links
- 300 million handovers per year



Future Cadastre 2035

- Accurate, Coordinate-based, Digitized
- Ubiquitous; incl. all easements, right of ways etc.
- Integrated
- 3–5 dimensioned
- Crowdsourcing, Internet of Things (IoT) – Smart Cities
- Building Information Modelling BIM
- Utility Mapping – digital underground visualizations
- Open Access – balanced with individual privacy
- (source: Lesley Arnold WB 2016 Washington D.C.)



Thank you!

www.nls.fi

